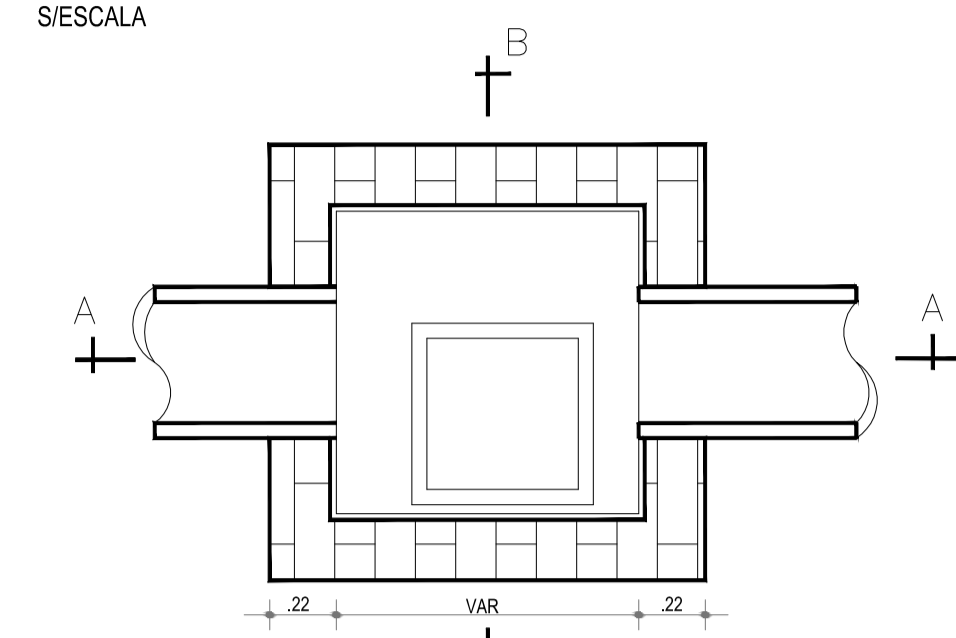
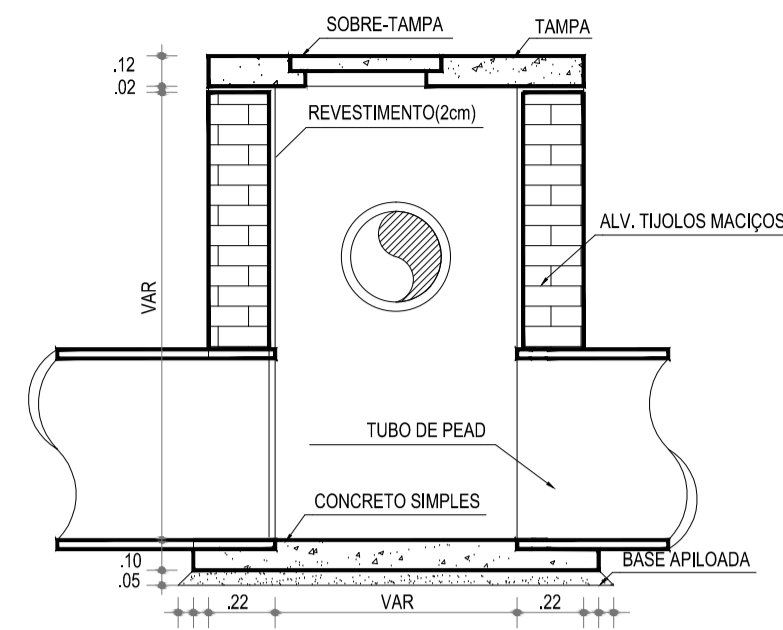


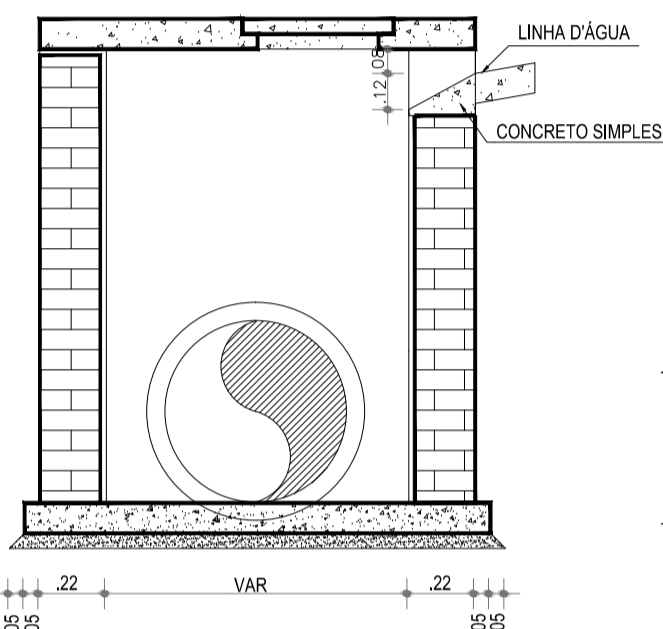
POÇO DE VISITA COM GAVETA



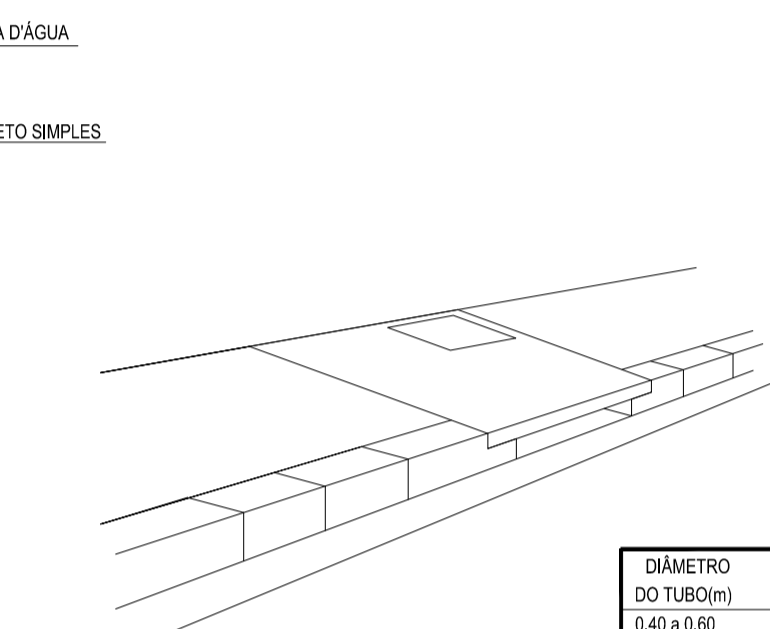
PLANTA BAIXA
S/ESCALA



CORTE A-A
S/ESCALA



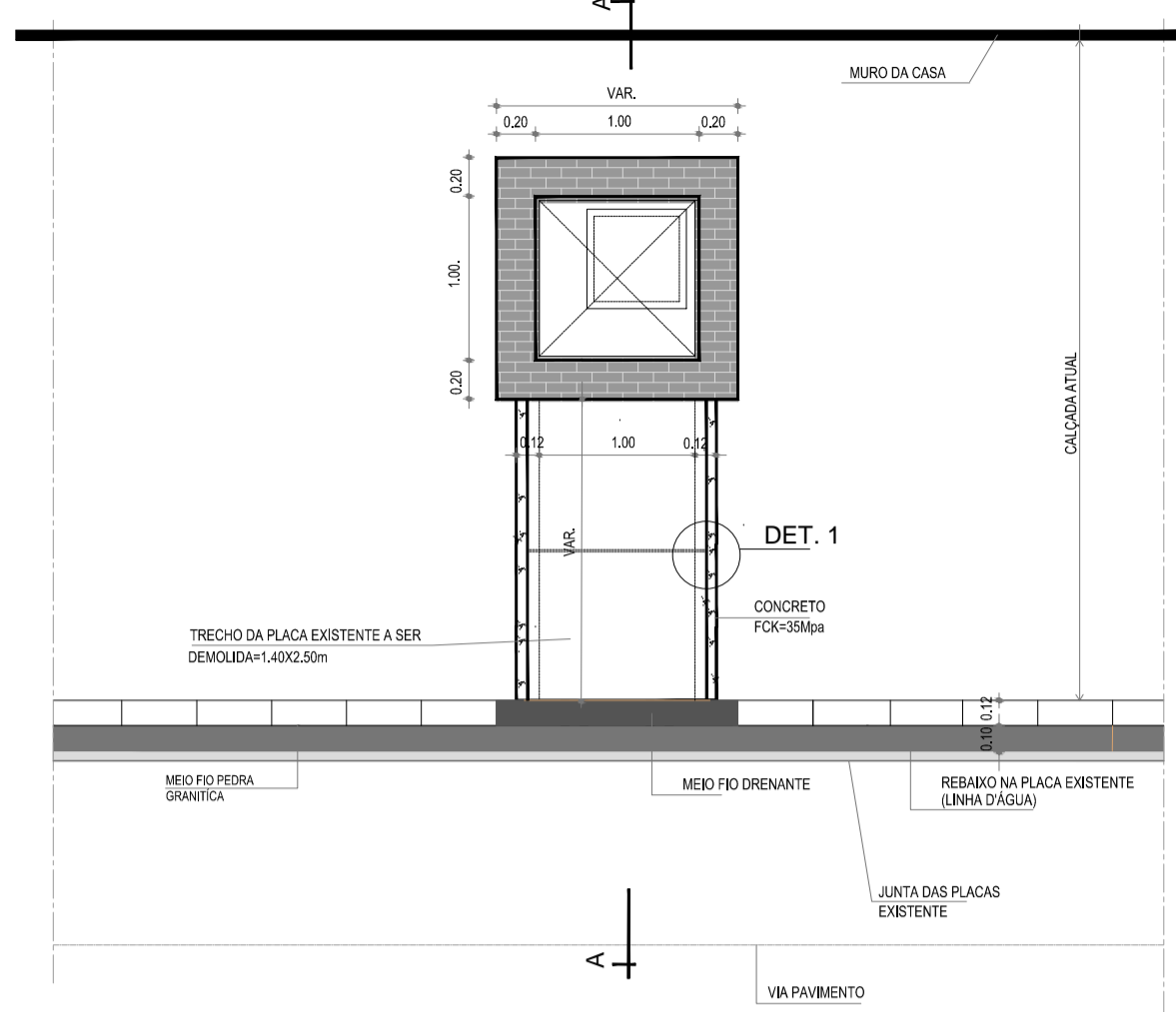
CORTE B-B
S/ESCALA



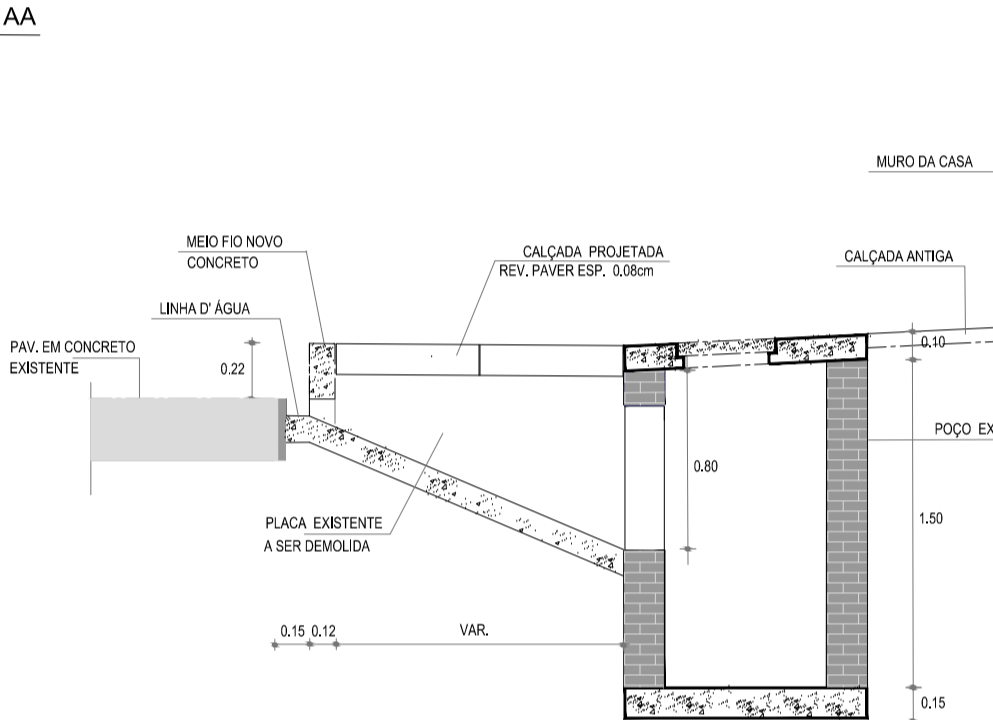
PERSPECTIVA
S/ESCALA

DIÂMETRO DO TUBO(m)	DIMENSÕES DOS POÇOS (L)
0,40 e 0,60	1,00 x 1,00
0,70 e 0,80	1,20 x 1,20
0,90 e 1,00	1,50 x 1,50
1,10 e 1,20	1,80 x 1,80

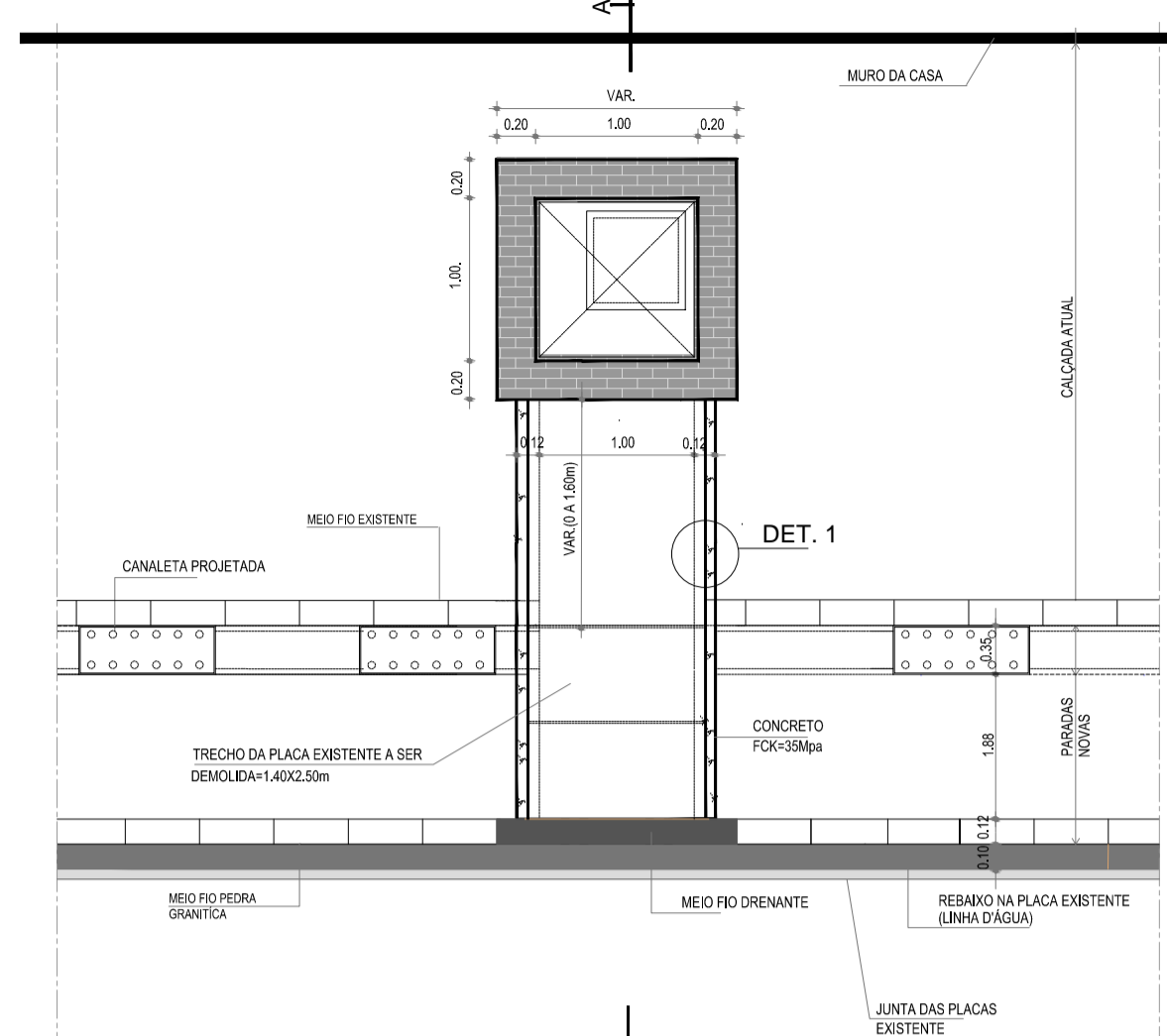
ACESSO AO POÇO SEM CANALETA



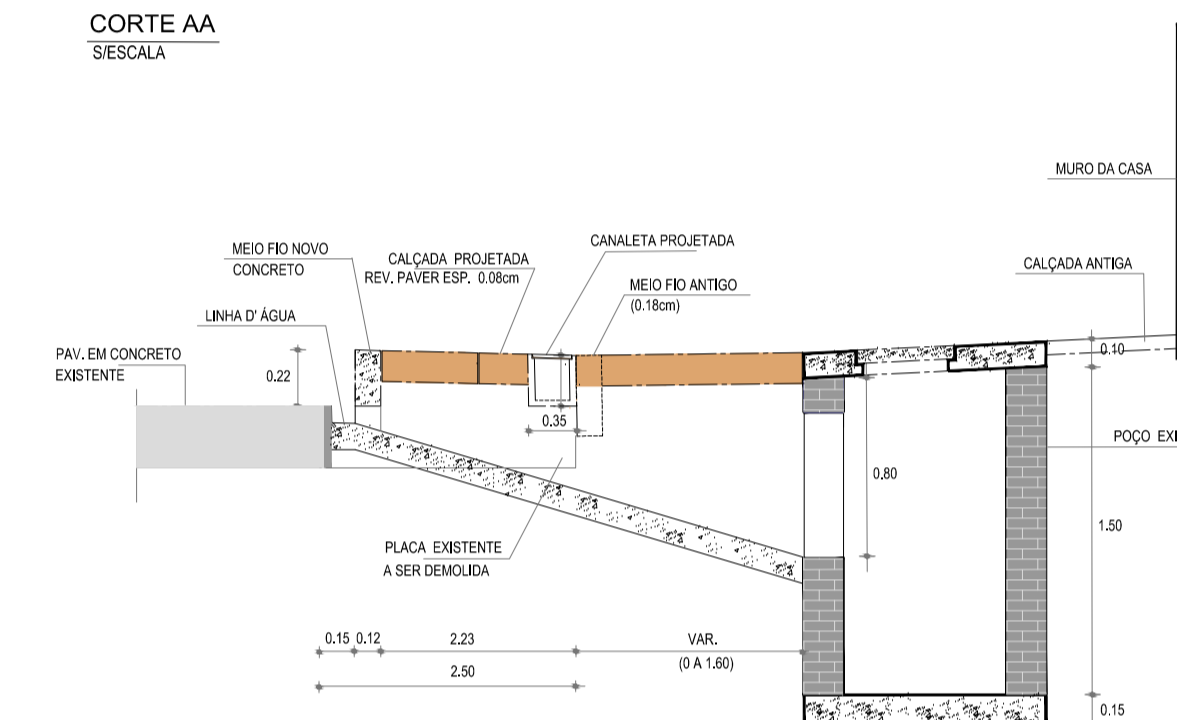
CORTE AA
S/ESCALA



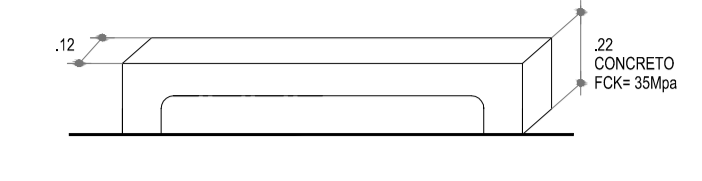
ACESSO AO POÇO COM CANALETA



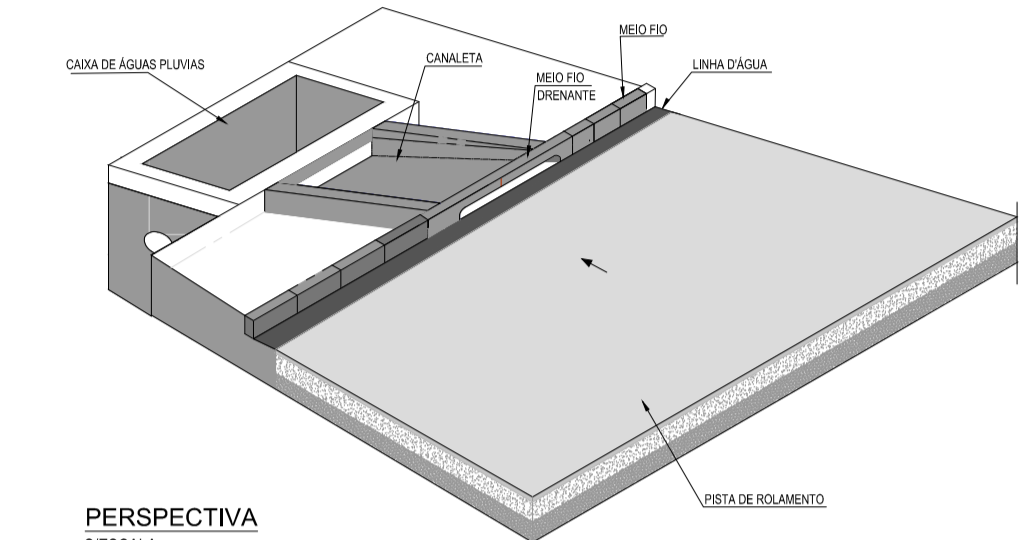
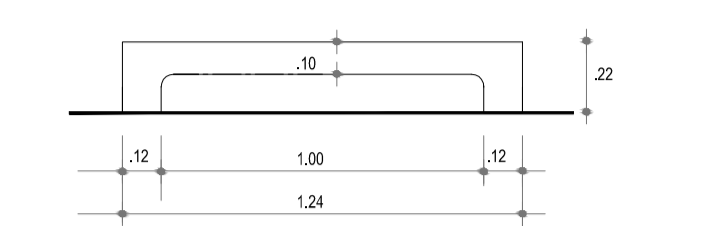
CORTE AA
S/ESCALA



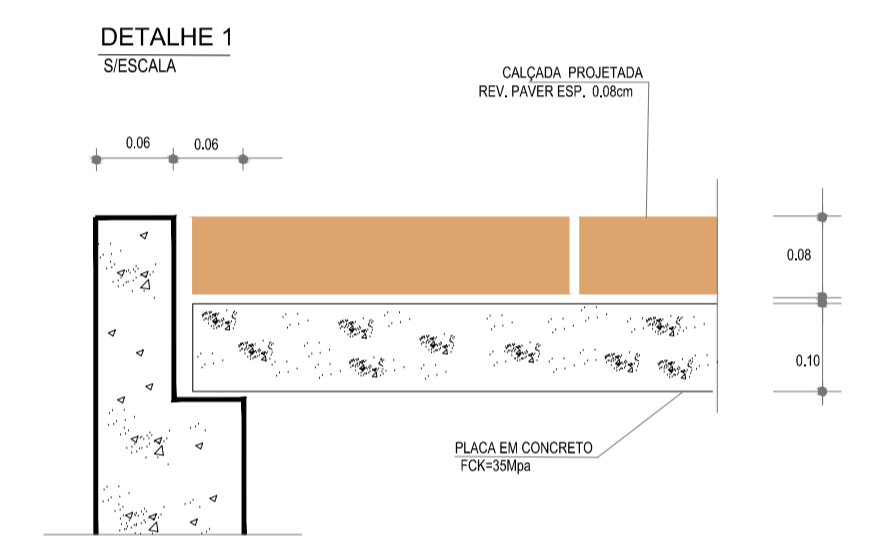
DETALHE DO MEIO FIO



PARADAS DE ÔNIBUS-AV. CONDE BOA VISTA

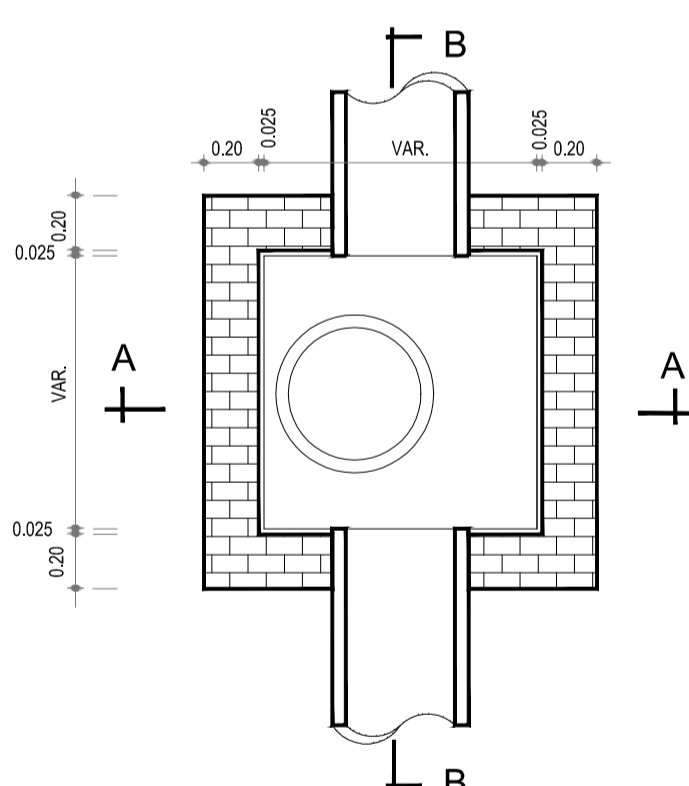


PERSPECTIVA
S/ESCALA

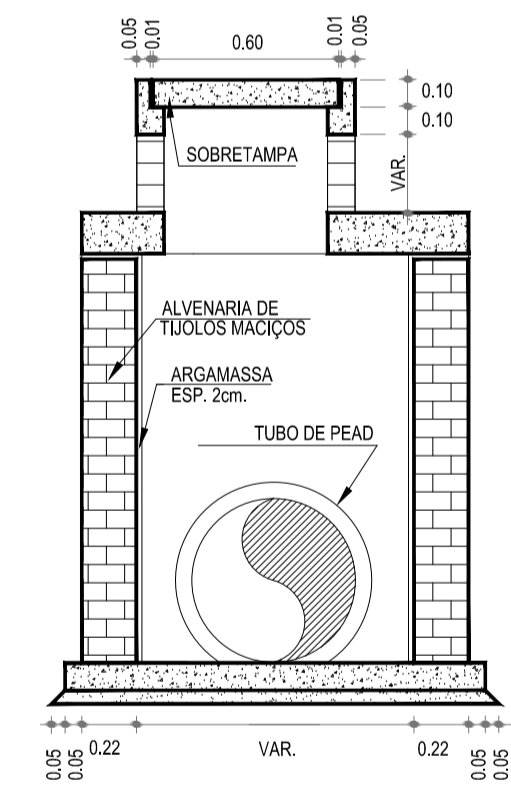


DETALHE 1
S/ESCALA

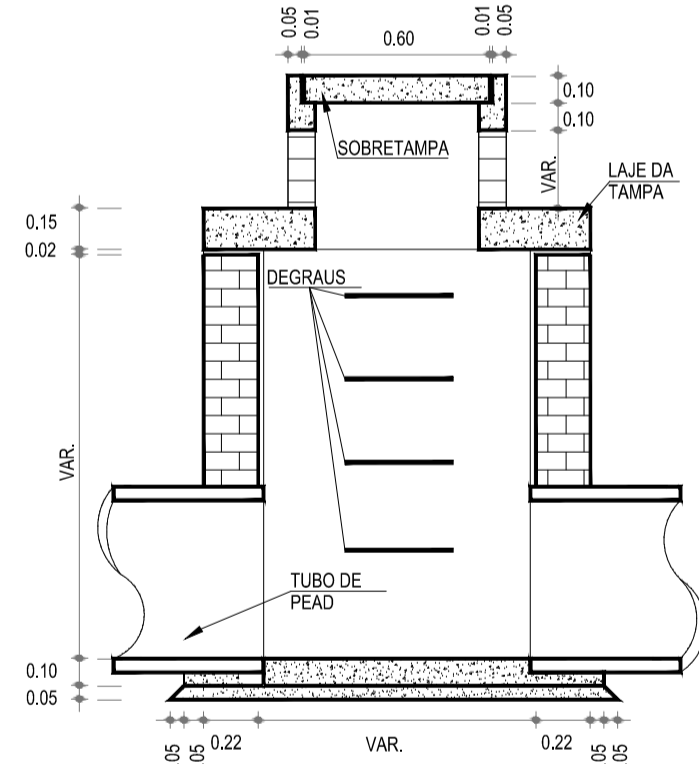
POÇO DE VISITA COM TAMPÃO



PLANTA BAIXA
S/ESCALA

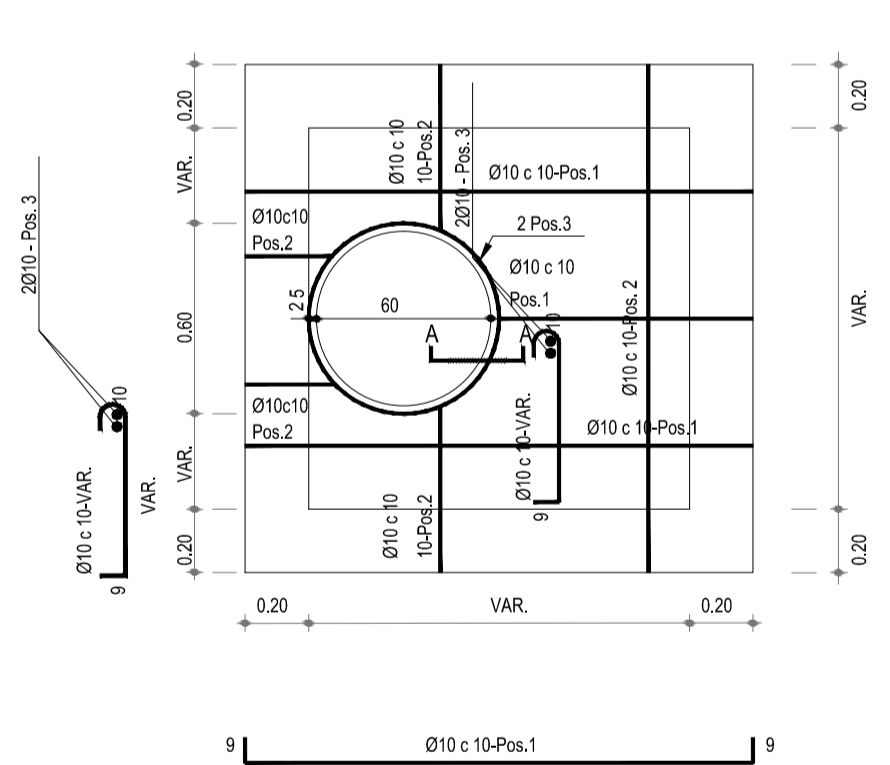


CORTE A-A
S/ESCALA

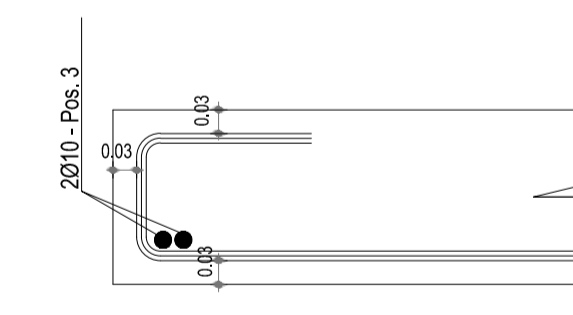
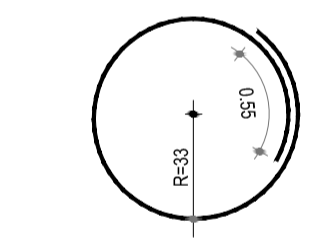


CORTE B-B
S/ESCALA

FORMA E ARMAÇÃO DA LAJE DA TAMPÃO



SEÇÃO A/A

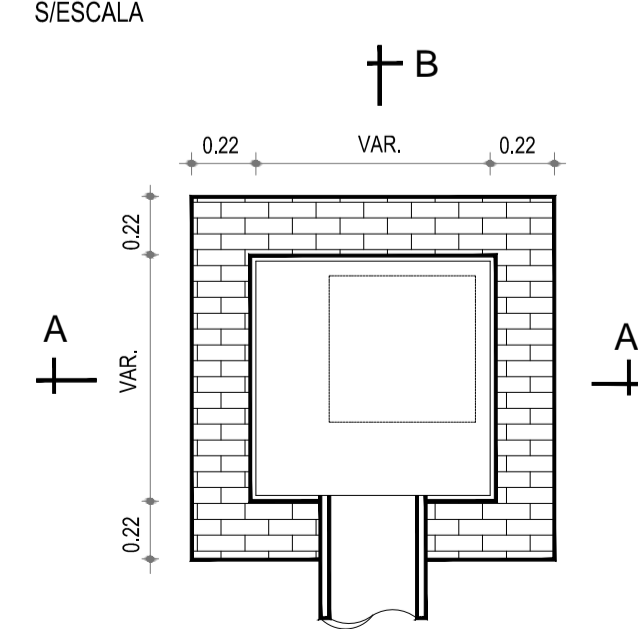


- OBS:
- 1) fck > 15MPa (150kgf/cm²)
 - 2) ESPESURA DA LAJE: 15cm.
 - 3) COBRIMENTO DA ARMAÇÃO: 3cm.
 - 4) CAMADA DE ATERRO MÍNIMO SOBRE A LAJE: 20cm.

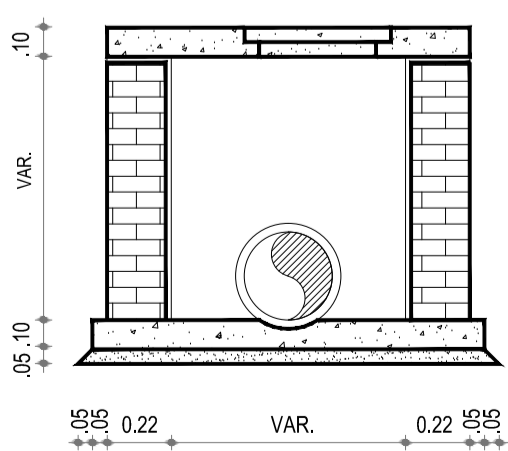
DIÂMETRO DO TUBO(m)	DIMENSÕES DOS POÇOS (L)
0,40 e 0,60	1,00 x 1,00
0,70 e 0,80	1,20 x 1,20
0,90 e 1,00	1,50 x 1,50
1,10 e 1,20	1,80 x 1,80

POÇO DIMENSÕES L x L	POSICÕES				PESO DE AÇO POR POÇO	
	1	2	3	CP		
105 X 105	9	197	24	VAR. 2	160	20 kgf
125 X 125	11	177	24	VAR. 2	160	20 kgf
155 X 155	14	207	24	VAR. 2	160	20 kgf
185 X 185	24	237	24	VAR. 2	160	20 kgf

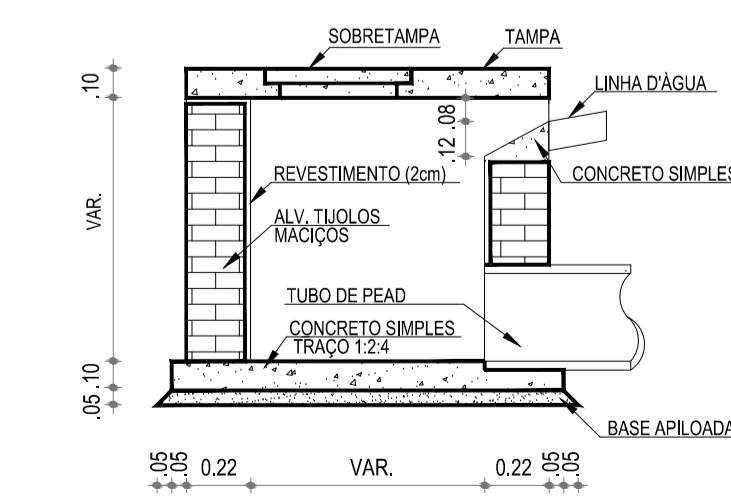
CAIXA COLETORA COM GAVETA



PLANTA BAIXA
S/ESCALA

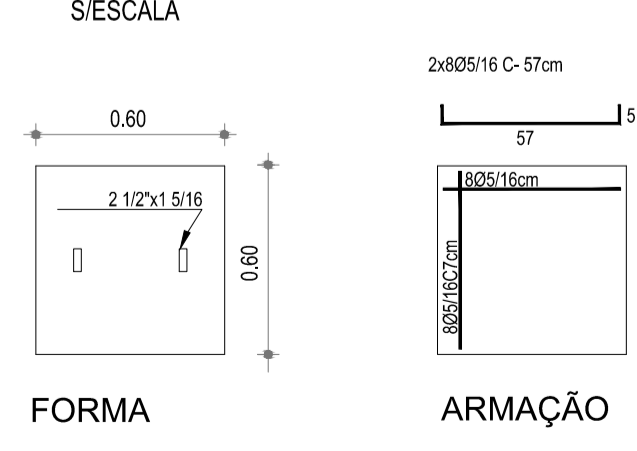


CORTE A-A
S/ESCALA



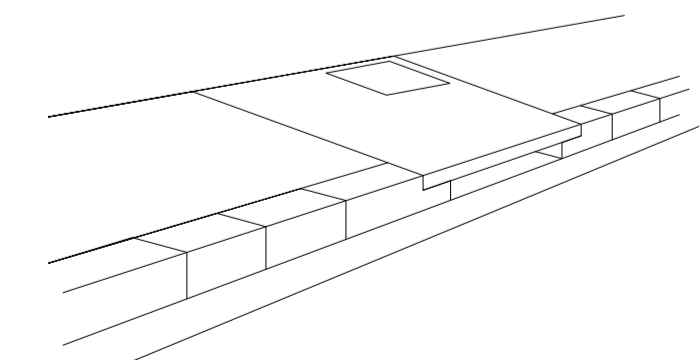
CORTE B-B
S/ESCALA

DETALHE DAS TAMPAS



FORMA

ARMAÇÃO




PERSPECTIVA
S/ESCALA

OBS:

- 1 - AS PAREDES DEVERÃO SER DE ALVENARIA DOBRADA DE TIJOLOS MACIÇOS PRENSADOS COM ARGAMASSA DE CIMENTO E AREIA C/TRAÇÃO 1:8.
- 2 - TODAS AS MEDIDAS ESTÃO COTADAS EM METROS.

LATERAL DA TAMPÃO

EQUIPE TÉCNICA		DATA	ABRIL/2018	
LEVANTAMENTO TOPOGRÁFICO		MACONE BELTRÃO		
DESENHO		EZILTA CHAVES		
PROJETO		EDUARDO GOMES - CREA-20.035 D/RJ		
VERIFICADO		ELIZA BARROS - CREA - 15078 D/PE		
APROVADO		RICARDO F. GONÇALVES - CREA - 9868 D/PE		
OBSERVAÇÃO				



EMLURB

PREFEITURA DA CIDADE DO RECIFE
SECRETARIA DE SERVIÇOS PÚBLICOS
EMPRESA DE MANUTENÇÃO E LIMPEZA URBANA

GERÊNCIA OPERACIONAL DE PROJETOS E ORÇAMENTOS

PRANCHA	18/19
ARG. Nº	AV-00/18

<p>AV. CONDE DA BOA VISTA CALÇADA</p>	
<p>PROJETO DE PAVIMENTAÇÃO E DRENAGEM</p>	<p>ESCALAS S/ ESCALA</p>
<p>PLANTA BAIXA E DETALHE</p>	